

Canada's Agriculture Industry

Modern, Dispersed, Poised for
Growth, Impacted by Vacancies

FINDING FARM WORKERS IS DIFFICULT



AGRICULTURE: CRITICAL LABOUR CHALLENGES

Agri-Workforce Shortages are Doubling Every 10 years

- 10 yrs ago: 30,000 workers
- Today: 59,000 workers
- 10 yrs from now: 114,000 workers

National Agriculture Job Vacancy Rate: 7%

- Rural Meat Processing Vacancy Rate: 9.3%
- Mushroom Farm Vacancy Rate: 9.7%

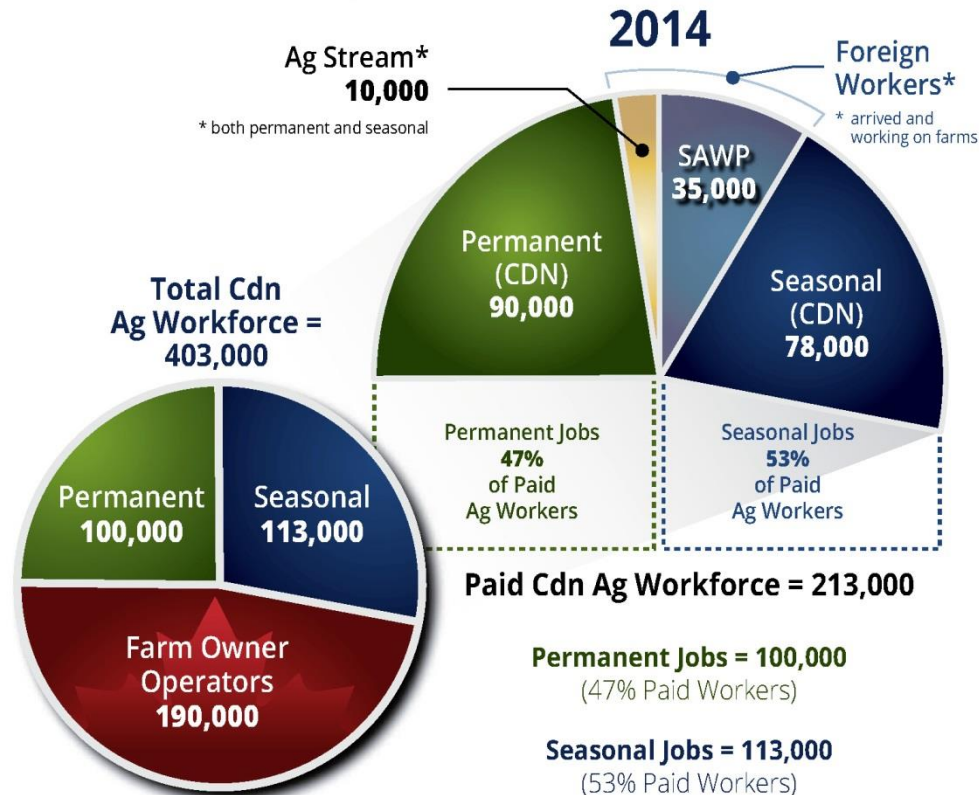


AGRIWORKFORCE SHORTAGES: EXTENSIVE

Permanent Jobs



Canadian Agricultural Workforce



Source: Canadian Agricultural Human Resource Council

Seasonal Jobs





AGRIWORKFORCE SHORTAGES: EXTENSIVE



Brought to you by:
@CdnAgHRCouncil
www.cahrc-cchrha.ca

Sources: Canadian Agricultural Human Resource Council,
Conference Board of Canada, Statistics Canada

International Workers Support Canadian Farm & Food Workforce

(share of agricultural workforce at its seasonal peak by source, 2014, per cent)



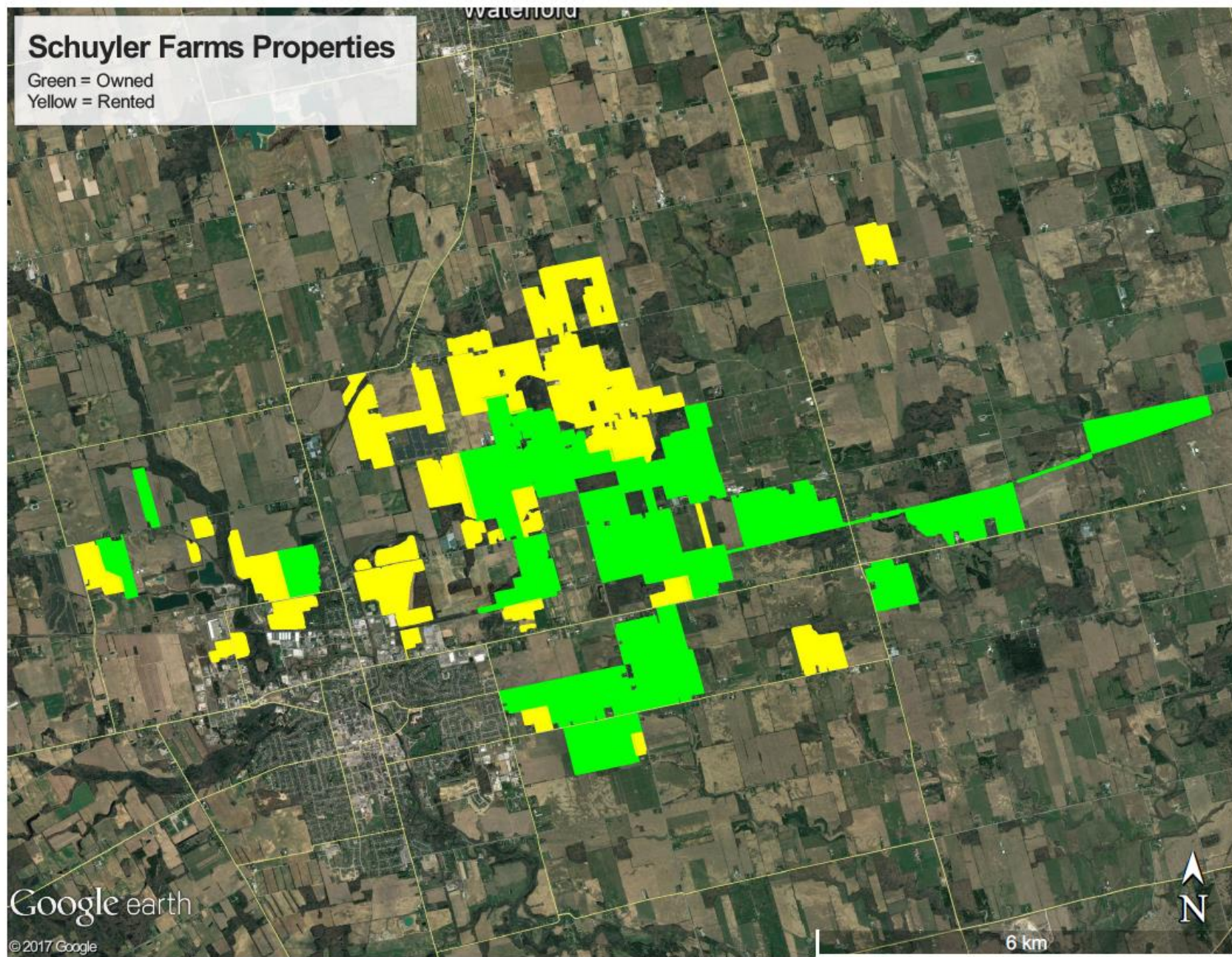
AGRIWORKFORCE IS UNIQUE





Schuyler Farms Properties

Green = Owned
Yellow = Rented















NATIONAL

Canada's agriculture sector faces significant labour challenges that put its viability and growth potential at risk.

Lots of Farm Job Opportunities in rural Canada!

On-farm agriculture

has the **highest job vacancy rate** of any industry at **seven percent**.

7%

JOB VACANCY RATE

Canadian agriculture

stands out as the **star performer on productivity** more than any other sector.

Output per worker increased

45%

from 2000-2015.



AGRI-LMI
LABOUR MARKET INFORMATION



Producers are losing

**\$1.5
BILLION**

or **2.7%** of the industry's **total value in sales**.



The current **labour gap** is

59,000

and in **10 years** the **ag industry** could be short **workers** for

114,000

jobs.



CANADIAN AGRICULTURAL
HUMAN RESOURCE COUNCIL
CONSEIL CANADIEN POUR LES
RESSOURCES HUMAINES EN AGRICULTURE

Canada

Funded by the Government of
Canada's Sectoral Initiatives Program

EMERGING AGRIWORKFORCE ISSUES



EMERGING AGRIWORKFORCE ISSUES



Canadian Farms Early Adopters of Technology



The DOT powered platform is an autonomous tool carrier. | Michael Raine photo



EMERGING AGRIWORKFORCE ISSUES



DID YOU KNOW?



Photo Courtesy of Vicki Dutton, Sask Pulse

CANADIAN AGRICULTURE PRODUCTIVITY

Output per worker increased 45%
from 2004-2014 making Agriculture
the **Star** Productivity Performer
of the Canadian economy.

@CdnAgHRCouncil
www.cahrc-cchrha.ca

Source: Canadian Agricultural Human Resource Council, Conference Board of Canada, Statistics Canada



CANADIAN AGRICULTURAL
HUMAN RESOURCE COUNCIL
CONSEIL CANADIEN POUR LES
RESSOURCES HUMAINES EN AGRICULTURE



Funded by the Government of
Canada's Sectoral Initiative Program

EMERGING AGRIWORKFORCE ISSUES



EMERGING AGRIWORKFORCE ISSUES



Recruitment & Retention



EMERGING AGRIWORKFORCE ISSUES



National unemployment 5.8%

- Rural towns close to full employment
- Primary Ag & Processing NOCs minimal unemployment

High job vacancy rates

- Beef 8%; Dairy 8%; Swine 6%; Sheep/Goat 15%;
Aquaculture 10%; Meat processing 9.3%;
Mushrooms farms 9.7%

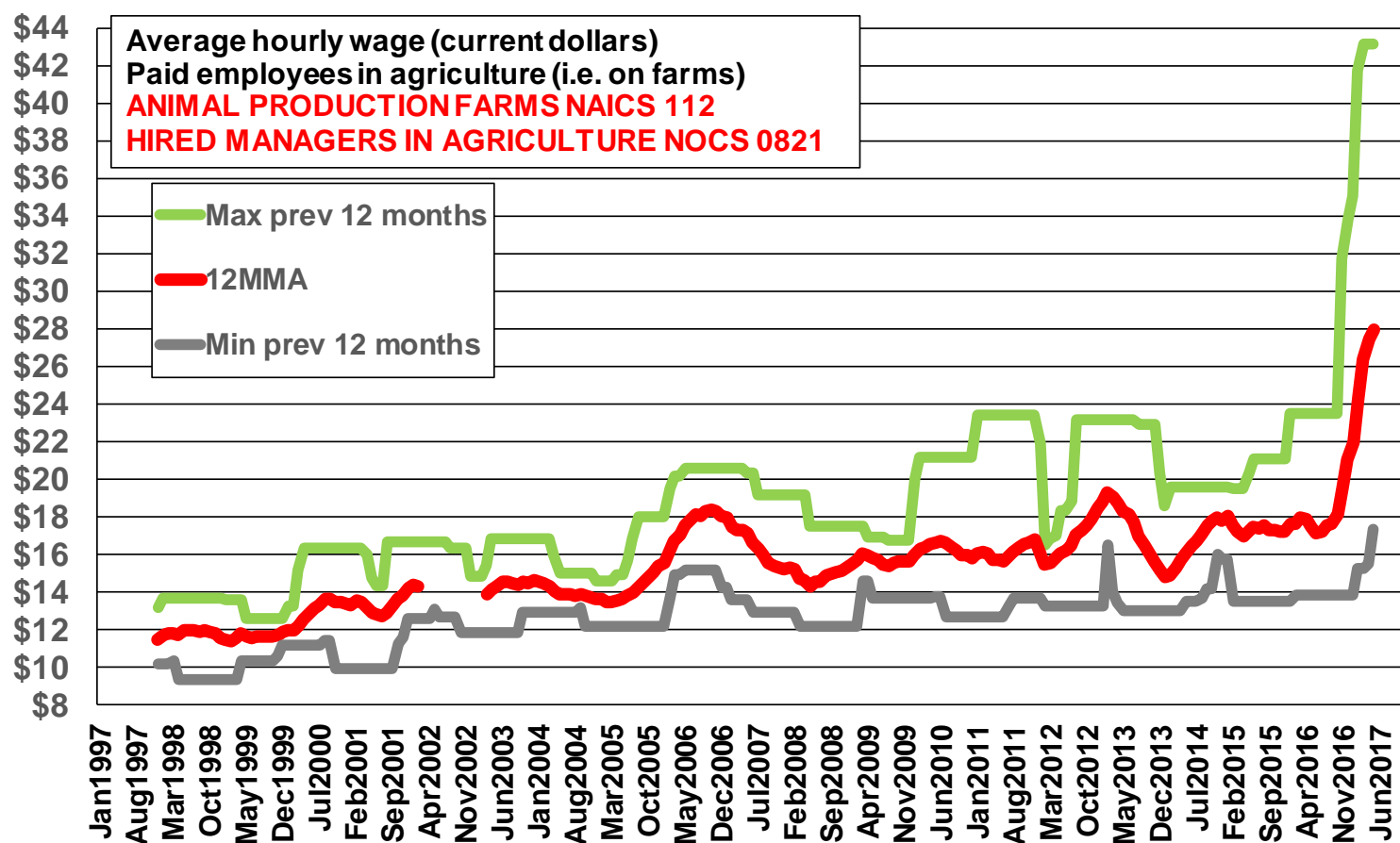
Wages Going Up

EMERGING AGRIWORKFORCE ISSUES



Wages Going Up

HIRED MANAGERS IN AGRICULTURE on ANIMAL PRODUCTION FARMS



Source: Statistics Canada, Labour Force Survey, special tabulation.

Chart by Ray D. Bollman

EMERGING AGRIWORKFORCE ISSUES



Agricultural Skills & Experience Needed Around the Globe



United States



United Kingdom



Australia



EMERGING AGRIWORKFORCE ISSUES



Brought to you by:
[@CdnAgHRCouncil](#)
www.cahrc-cchrha.ca

Sources: Canadian Agricultural Human Resource Council,
Conference Board of Canada, Statistics Canada

International Workers Support Canadian Farm & Food Workforce

(share of agricultural workforce at its seasonal peak by source, 2014, per cent)

