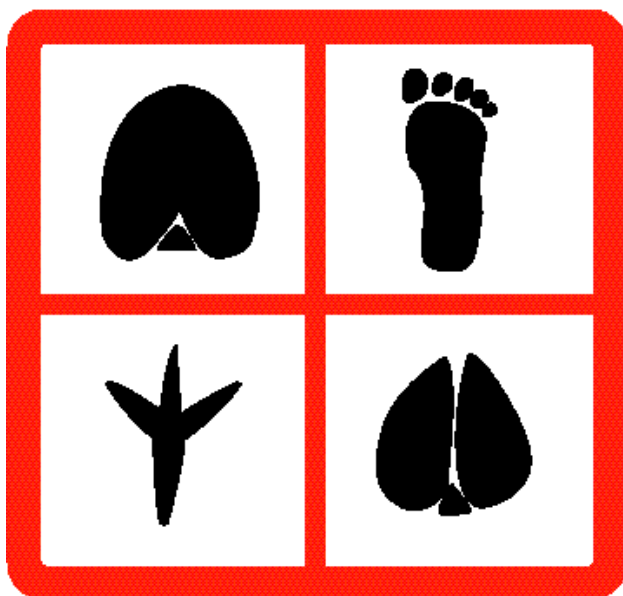


# LIVESTOCK HANDLING SAFETY



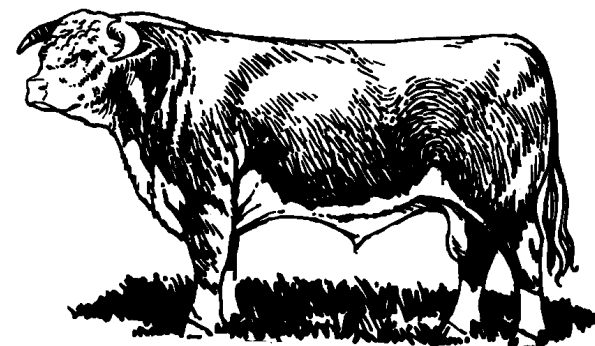
Put your best foot forward!

**FACT:** 1 in 5 hospitalized farm injuries are livestock related.

**FACT:** Following tractor and machinery incidents, livestock-handling is the next most common cause of death on Canadian Farms.

**FACT:** People aged 60 and older are at greatest risk of death due to animal related incidents.

- **BULL ATTACKS** account for 42% of livestock-related fatalities, but only 6% of hospitalized injuries on Canadian farms.
- Only about 1 in 20 victims survive a bull attack.
- Most bull attacks happen in stock yards or open fields – not in barns.



- **HORSES** are very dangerous and account for 40% of livestock related deaths and 46.5 of hospitalized injuries.
- Most fatalities are caused by being kicked by a horse.
- Most injuries are caused by the rider falling from the horse.

- **COWS** are involved in 33% of animal related injuries, and 16% of fatalities.
- Most cow-related incidents involve the presence of a calf.
- Most victims of cow-related incidents are age 60 or older.



[www.cfa-fca.ca](http://www.cfa-fca.ca)



[www.ccasrh.org](http://www.ccasrh.org)



[www.fcc-sca.ca](http://www.fcc-sca.ca)



[www.agr.ca](http://www.agr.ca)

FARM SAFETY MEANS FARM SAFELY

YOUR LOCAL CONTACT:

