



**COME TO ME** – (may mean “Come help me” in an emergency): Raise arm vertically overhead, palm to the front, and rotate in large horizontal circles.



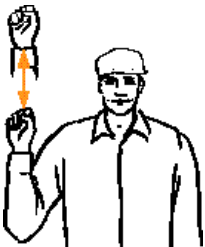
**STOP** – Raise hand upward, arm fully extended, palm to the front. Hold that position until the signal is understood.



**MOVE OUT / TAKE OFF** – Face desired direction of movement. Extend arm straight out behind you, then swing it overhead and forward until it's straight out in front of you with palm down.



**MOVE TOWARD ME / FOLLOW ME** – Point toward person or vehicle you want moved. Hold one hand in front of you, palm facing you, and move your forearm back and forth.



**SPEED IT UP / INCREASE SPEED** – Raise hand to shoulder, fist closed. Thrust fist upward to full extent of arm and back to shoulder rapidly several times.



**STOP THE ENGINE** – Move your right arm across your neck from left to right in a “throat-cutting” motion.



**SLOW IT DOWN / DECREASE SPEED** – Extend arm horizontally sideward, palm down, and wave arm downward 45° minimum several times, keeping arm straight. Don't move arm above horizontal.



**LEFT TURN** – Left arm extended horizontally



**RIGHT TURN** – Left hand and arm extended upward at the elbow



**START THE ENGINE** – Move arm in a circle at waist level, as though you were cranking an engine.



**THIS FAR TO GO** – Put hands in front of face, palms facing each other. Move hands together or further apart to indicate how far to go.

# HAND SIGNALS ON THE FARM LEARN THEM - USE THEM

**WORKING AROUND MACHINERY** is often noisy. Communication between workers is essential to avoid confusion and reduce the possibility of an accident. The use of hand signals to communicate, instead of talking, lets co-workers exchange instructions from a safe distance.

**THESE ARE INDUSTRY STANDARD HAND SIGNALS.** Uniformity is the key point – everyone must get the same message from the same signal. Learn them, use them – and help prevent farm injuries and fatalities. Please display this poster prominently in your farm machinery work area.



**LOWER EQUIPMENT** – Point toward ground with forefinger while moving the hand in circular motion.



**RAISE EQUIPMENT** – Point upward with forefinger, making a circle at head level with your hand.

**F A R M   S A F E T Y   M E A N S   F A R M   S A F E L Y**

Adapted with permission from University of Missouri, Copyright 2000. Published by University Extension, University of Missouri-Columbia. The American Society of Agricultural Engineers developed standard Agricultural and Signals for use in Canada and the United States.

